



**JOHN PSARRAS**  
**S&P CHARTERING**



IN PIRAEUS SINCE 1981

Ph:+30 210 4123696 4133931 4115482 Fx:+30 210 4170618  
E'Mail: psarras@psarrasj.gr Website:www.psarrasj.gr  
(Members of Hellenic Shipbrokers Association - 1984)

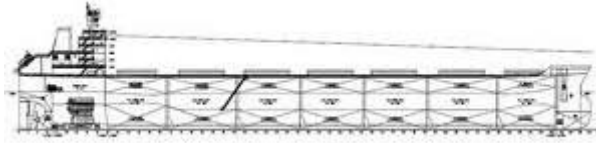
## **BI-MONTH REPORT**

## **END OCTOBER 2020**

**The scope of this report is to assist our clients and friends with a quick glance every about 15 days to get a feeling of the market by reading the more interesting sales in view of higher or lower prices of the main vessels types as well as the demolition prevailing prices.**



**Copyright:Justo Prieto**



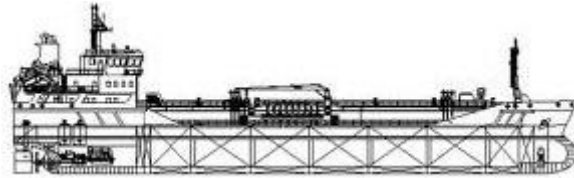
## BULK CARRIERS

| NAME  | DWT            | Y.O.B        | P.O.B       | PRICE                             |
|---|----------------|--------------|-------------|-----------------------------------|
| NSS HONESTY   | 229548         | 2007         | JAPAN       | ABT 13 MIL USD TO GREEKS          |
| SHIN EI   | 207933         | 2008         | JAPAN       | 18,9 MIL USD TO CHINESE           |
| TRUE DREAM  | 180694         | 2014         | PHILIPPINES | 27 MIL USD TO UNDISCLOSED         |
| AQUA VISION   | 180353         | 2011         | CHINA       | 15,75 MIL USD TO GREEKS           |
| TILDA OLDENDORFF                                    | 180556         | 2011         | PHILIPPINES | 18,4 MIL USD TO GREEKS            |
| HUGE HAKATA   | 180643         | 2012         | PHILIPPINES | ABT 23 MIL USD TO UNDISCLOSED     |
| CHINA STEEL RESPONSIBILITY<br>CHINA STEEL INTEGRITY | 175775         | 2003<br>2002 | TAIWAN      | EN BLOC 18,5 MIL USD TO TAIWANESE |
| KUREN AI  | 86041          | 2007         | JAPAN       | 10,2 MIL USD TO CHINESE           |
| BTG EIGER<br>BTG EVEREST                            | 81031<br>81014 | 2016<br>2015 | JAPAN       | EN BLOC 46,5 MIL USD TO GREEKS    |
| CERBA   | 80370          | 2010         | S.KOREA     | 13 MIL USD TO UNDISCLOSED         |
| CRIMSON MONARCH                                     | 77116          | 2014         | JAPAN       | ABT 17,5 MIL USD TO GREEKS        |
| DEWI PARWATI  | 75700          | 2011         | CHINA       | 9,4 ML USD TO CHINESE             |
| IRON KOVDOR   | 72474          | 1998         | JAPAN       | 3,85 MIL USD TO UNDISCLOSED       |
| NAUTICAL GEORGIA                                    | 63445          | 2017         | CHINA       | 17 MIL USD TO UNDISCLOSED         |
| GH CITATION<br>GH BLACK CAVIAR                      | 63292<br>63277 | 2016         | CHINA       | EN BLOC 34 MIL USD TO OMANI       |
| SBI HYPERION  | 61171          | 2016         | CHINA       | 17,5 MIL USD TO UNDISCLOSED       |
| SBI ZEUS  | 60414          | 2016         | JAPAN       | 18,5 MIL USD TO GREEKS            |
| NAVIOS SOLEIL                                       | 57334          | 2009         | S.KOREA     | 8,5 MIL USD TO UNDISCLOSED        |
| CAS AMARES  | 55783          | 2011         | VIETNAM     | 8,85 MIL USD TO GREEKS            |
| YUTAI BREEZE  | 55088          | 2010         | CHINA       | 9,8 MIL USD TO UNDISCLOSED        |
| PORT ESTORIL  | 52822          | 2001         | JAPAN       | 4,6 MIL USD TO CHINESE            |
| M. EMIR AKSOY                                       | 47245          | 1998         | JAPAN       | 3,2 MIL USD TO UNDISCLOSED        |



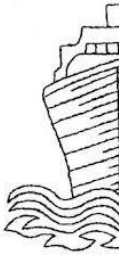
## CONTAINER SHIPS

| NAME           | DWT    | TEU  | Y.O.B. | P.O.B   | PRICE                             |
|----------------|--------|------|--------|---------|-----------------------------------|
| OOCL KAOHSIUNG | 66940  | 5888 | 2006   | JAPAN   | ABT 15 MIL USD TO UNDISCLOSED     |
| APL ENGLAND    | 67500  | 5510 | 2001   | S.KOREA | 12 MIL USD TO UNDISCLOSED         |
| BALTIC EAST    | 64989  | 4014 | 2005   | S.KOREA | 10 MIL USD TO SWISS               |
| MARIA SCHULTE  | 42141  | 3534 | 2006   | CHINA   | 7,5 MIL USD TO GREEKS             |
| E.R. TIANSHAN  | 101500 | 8533 | 2006   | S.KOREA | EN BLOC ABT 158 MIL USD TO SWISS. |
| E.R. TIANPING  | 101500 | 8533 | 2006   |         |                                   |
| E.R. TOKYO     | 101500 | 8533 | 2006   |         |                                   |
| E.R. TEXAS     | 100700 | 8465 | 2006   |         |                                   |
| E.R. YOKOHAMA  | 83133  | 7849 | 2004   |         |                                   |
| E.R. VANCOUVER | 83133  | 7849 | 2004   |         |                                   |
| SONDERBORG     | 13710  | 1118 | 2006   | CHINA   | 2,7 MIL USD TO GREEKS             |



## TANKERS

| NAME   | DWT                        | HULL | Y.O.B                | P.O.B.  | PRICE                                   |
|--|----------------------------|------|----------------------|---------|---|
| PU TUO SAN<br>TAI HUNG SAN<br>TAI SAN                          | 318833<br>317924<br>318080 | DH   | 2011<br>2010<br>2009 | CHINA   | EN BLOC 110 MIL<br>USD TO GREEKS        |
| SEA LION   | 318778                     | DH   | 2003                 | S.KOREA | 27 MIL USD TO<br>CHINESE                |
| ADS PAGE   | 299164                     | DH   | 2002                 | JAPAN   | 25,5 MIL USD TO<br>UAE BASED            |
| SEAWAYS<br>TANABE  | 298561                     | DH   | 2002                 | JAPAN   | 25 MIL USD<br>TO<br>UNDISCLO<br>SED     |
| OCEAN TRADER   | 108770                     | DH   | 2008                 | CHINA   | 16,5 MIL USD TO<br>UNDISCLOSED          |
| ATLANTIC MIRAGE  | 51476                      | DH   | 2009                 | S.KOREA | 16,3 MIL USD TO<br>UNDISCLOSED          |
| ZHU JIANG<br>BEI JIANG   | 50192<br>5012              | DH   | 2009<br>2009         | S.KOREA | EN BLOC 26 MIL<br>USD TO GREEKS         |
| GLAFKOS  | 49997                      | DH   | 2013                 | S.KOREA | 22,7 MIL USD TO<br>UNDISCLOSED          |
| UACC IBN AL<br>ATHEER  | 45994                      | DH   | 2003                 | JAPAN   | 8,15 MIL USD TO<br>UNDISCLOSED          |
| VALLE DI ARAGONA<br>VALLE DI SIVIGLIA<br>VALLE DI<br>ANDALUSIA | 42721                      | DH   | 2001                 | S.KOREA | EN BLOC 21 MIL<br>USD TO<br>INDONESIANS |
| HIK  | 39999                      | DH   | 2005                 | CROATIA | 7,8 MIL USD TO<br>TURKISH               |
| MALHARI  | 13149                      | DH   | 2010                 | S.KOREA | 6,2 MIL USD TO<br>VIETNAMESE            |



# DEMOLITION



## BANGLADESH

| NAME           | LDT   | DWT    | Y.O.B | P.O.B.  | PRICE                    |
|----------------|-------|--------|-------|---------|--------------------------|
| LUCKY SEAMAN   | 5751  | 26455  | 1991  | JAPAN   | 348 USD<br>PER LDT       |
| STELLA LIBERTY | 39941 | 291435 | 1993  | JAPAN   | 393<br>USD<br>PER<br>LDT |
| ALMADA         | 17002 | 99997  | 1998  | S.KOREA | 395<br>USD<br>PER<br>LDT |
| T REN          | 10462 | 5872   | 1990  | JAPAN   | 356<br>USD<br>PER<br>LDT |



## INDIA

| NAME            | LDT   | DWT   | Y.O.B | P.O.B. | PRICE                    |
|-----------------|-------|-------|-------|--------|--------------------------|
| ROCKIES HIGHWAY | 11500 | 12828 | 2006  | JAPAN  | 370 USD<br>PER LDT       |
| GLOBULUS        | 10641 | 49575 | 1995  | JAPAN  | 365<br>USD<br>PER<br>LDT |
| KARNIKA         | 30213 | 6261  | 1990  | ITALY  | 391<br>USD<br>PER<br>LDT |



| NAME        | LDT   | DWT   | Y.O.B | P.O.B. | PRICE                    |
|-------------|-------|-------|-------|--------|--------------------------|
| WELVIEW     | 14112 | 94303 | 1989  | JAPAN  | 385 USD<br>PER LDT       |
| POLINA      | 6692  | 29531 | 1986  | JAPAN  | 383<br>USD<br>PER<br>LDT |
| LILA ATHENS | 9338  | 25850 | 2000  | CHINA  | 390<br>USD<br>PER<br>LDT |

**Disclaimer**

All information stated in this report has been collected from a variety of maritime sources and is presented in good faith and without any guarantee from our part .

J. PSARRAS S+P CHARTERING, shall not accept any responsibility for any errors and/or omissions arising from this report and cannot be held responsible for any action taken and/or losses occurred as a result of the details included in this report.

Recirculation of same is not permitted without the written agreement of the aforementioned company, which is the only entitled one to produce copies of same.